

**DIMENSIONS ARE TO BE USED AS A QUICK REFERENCE ONLY, ACTUAL SIZES MAY VARY.**

IF YOU USE THIS GUIDE TO CONSTRUCT YOUR WALL OPENINGS, BE SURE TO DOUBLE CHECK YOUR ACTUAL ROUGH OPENING DIMENSIONS BEFORE APPROVING / RELEASING YOUR AD SYSTEMS SHOP DRAWINGS FOR THE FABRICATION OF YOUR DOORS.

IT IS YOUR RESPONSIBILITY TO ENSURE THAT YOUR WALL OPENINGS ARE THE CORRECT SIZE TO FIT THE PROJECT SPECIFIC DOORS THAT YOU ORDER.

**NOTES:**

- \* AD SYSTEMS STANDARD CLEAR OPENING HEIGHT IS 84" (7'-0")
- ^ DOOR LEAVES OVER 48" WIDE ARE CONSIDERED "OVERSIZED". ADDITIONAL CHARGES AND LEAD TIMES WILL APPLY. SEE SECOND SHEET FOR ADDITIONAL INFORMATION.

**DOOR PANEL WEIGHTS**

FLUSH WOOD = 6.5 LBS PER SQ FT  
 ALUMINUM FRAME WITH 1/4" GLASS = 4 LBS PER SQ FT

**MAXIMUM SIZE FOR DOOR PANELS:**

DOOR	WIDTH	HEIGHT
WOOD:	60"	120"
ALUMINUM FRAME WITH 1/4" GLASS:	120"	108"

**WIDTH CALCULATIONS:**

THE "CLEAR OPENING WIDTH" IS FROM THE INSIDE OF FRAME AT JAMB TO EDGE OF DOOR IN FULLY OPEN POSITION

- ROUGH OPENING = CLEAR OPENING PLUS (+) 11"
- DOOR LEAF = CLEAR OPENING PLUS (+) 13 1/2", THEN MINUS (-) 1/8", THEN DIVIDE BY (÷) 2
- VALANCE WIDTH = DOOR WIDTH TIMES (X) 2, PLUS CLEAR OPENING, THEN PLUS (+) 1"

**HEIGHT CALCULATIONS:**

THE "CLEAR OPENING HEIGHT" IS FINISH FLOOR TO INSIDE OF FRAME AT HEAD

- ROUGH OPENING = CLEAR OPENING HEIGHT PLUS (+) 1"
- DOOR LEAF = CLEAR OPENING HEIGHT PLUS (+) 1/4"

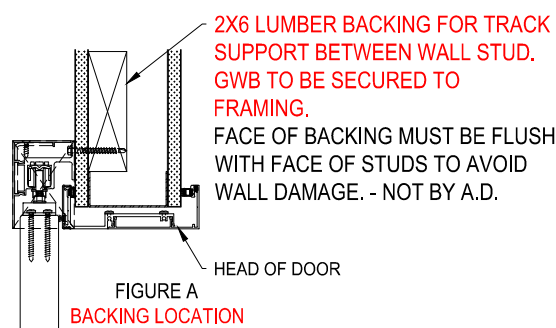
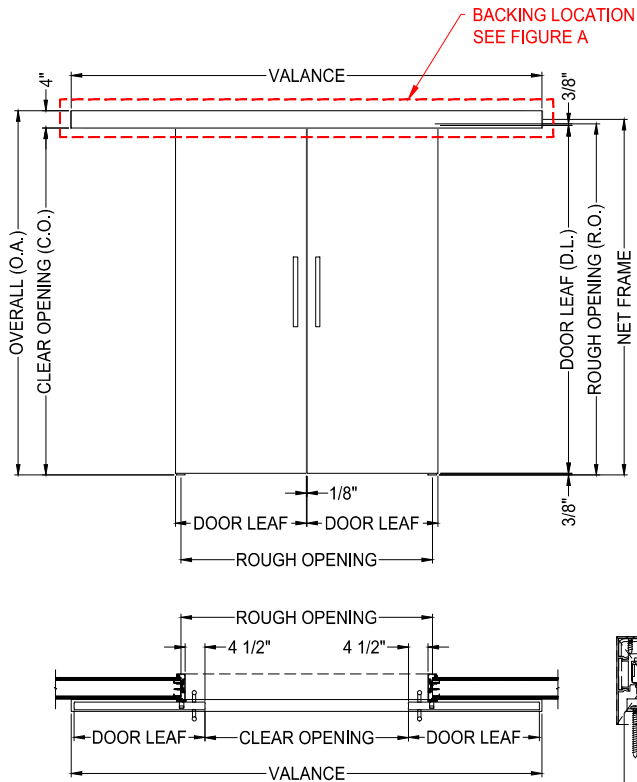
**BI-PARTING PAIR DOORS**

**BARN DOOR WIDTHS**

CLEAR OPENING	ROUGH OPENING	DOOR LEAF	VALANCE WIDTH
64 5/8"	75 5/8"	39"	143 5/8"
65 5/8"	76 5/8"	39 1/2"	145 5/8"
66 5/8"	77 5/8"	40"	147 5/8"
67 5/8"	78 5/8"	40 1/2"	149 5/8"
68 5/8"	79 5/8"	41"	151 5/8"
69 5/8"	80 5/8"	41 1/2"	153 5/8"
70 5/8"	81 5/8"	42"	155 5/8"
71 5/8"	82 5/8"	42 1/2"	157 5/8"
72 5/8"	83 5/8"	43"	159 5/8"
73 5/8"	84 5/8"	43 1/2"	161 5/8"
74 5/8"	85 5/8"	44"	163 5/8"
75 5/8"	86 5/8"	44 1/2"	165 5/8"
76 5/8"	87 5/8"	45"	167 5/8"
77 5/8"	88 5/8"	45 1/2"	169 5/8"
78 5/8"	89 5/8"	46"	171 5/8"
79 5/8"	90 5/8"	46 1/2"	173 5/8"
80 5/8"	91 5/8"	47"	175 5/8"
81 5/8"	92 5/8"	47 1/2"	177 5/8"
82 5/8"	93 5/8"	48"	179 5/8"
83 5/8"	94 5/8"	^ 48 1/2"	181 5/8"
84 5/8"	95 5/8"	^ 49"	183 5/8"
85 5/8"	96 5/8"	^ 49 1/2"	185 5/8"
86 5/8"	97 5/8"	^ 50"	187 5/8"
87 5/8"	98 5/8"	^ 50 1/2"	189 5/8"
88 5/8"	99 5/8"	^ 51"	191 5/8"
89 5/8"	100 5/8"	^ 51 1/2"	193 5/8"
90 5/8"	101 5/8"	^ 52"	195 5/8"
91 5/8"	102 5/8"	^ 52 1/2"	197 5/8"
92 5/8"	103 5/8"	^ 53"	199 5/8"
93 5/8"	104 5/8"	^ 53 1/2"	201 5/8"
94 5/8"	105 5/8"	^ 54"	203 5/8"
95 5/8"	106 5/8"	^ 54 1/2"	205 5/8"
96 5/8"	107 5/8"	^ 55"	207 5/8"
97 5/8"	108 5/8"	^ 55 1/2"	209 5/8"
98 5/8"	109 5/8"	^ 56"	211 5/8"
99 5/8"	110 5/8"	^ 56 1/2"	213 5/8"
100 5/8"	111 5/8"	^ 57"	215 5/8"
101 5/8"	112 5/8"	^ 57 1/2"	217 5/8"
102 5/8"	113 5/8"	^ 58"	219 5/8"
103 5/8"	114 5/8"	^ 58 1/2"	221 5/8"
104 5/8"	115 5/8"	^ 59"	223 5/8"
105 5/8"	116 5/8"	^ 59 1/2"	225 5/8"
106 5/8"	117 5/8"	^ 60"	227 5/8"

**BARN DOOR HEIGHTS**

CLEAR OPENING	ROUGH OPENING	DOOR LEAF
80"	81"	80 1/4"
80 1/2"	81 1/2"	80 3/4"
81"	82"	81 1/4"
81 1/2"	82 1/2"	81 3/4"
82"	83"	82 1/4"
82 1/2"	83 1/2"	82 3/4"
83"	84"	83 1/4"
83 1/2"	84 1/2"	83 3/4"
* 84"	* 85"	* 84 1/4"
84 1/2"	85 1/2"	84 3/4"
85"	86"	85 1/4"
85 1/2"	86 1/2"	85 3/4"
86"	87"	86 1/4"
86 1/2"	87 1/2"	86 3/4"
87"	88"	87 1/4"
87 1/2"	88 1/2"	87 3/4"
88"	89"	88 1/4"
88 1/2"	89 1/2"	88 3/4"
89"	90"	89 1/4"
89 1/2"	90 1/2"	89 3/4"
90"	91"	90 1/4"
90 1/2"	91 1/2"	90 3/4"
91"	92"	91 1/4"
91 1/2"	92 1/2"	91 3/4"
92"	93"	92 1/4"
92 1/2"	93 1/2"	92 3/4"
93"	94"	93 1/4"
93 1/2"	94 1/2"	93 3/4"
94"	95"	94 1/4"
94 1/2"	95 1/2"	94 3/4"
95"	96"	95 1/4"
95 1/2"	96 1/2"	95 3/4"
96"	97"	96 1/4"
96 1/2"	97 1/2"	96 3/4"
97"	98"	97 1/4"
97 1/2"	98 1/2"	97 3/4"
98"	99"	98 1/4"
98 1/2"	99 1/2"	98 3/4"
99"	100"	99 1/4"
99 1/2"	100 1/2"	99 3/4"
100"	101"	100 1/4"
100 1/2"	101 1/2"	100 3/4"
101"	102"	101 1/4"
101 1/2"	102 1/2"	101 3/4"
102"	103"	102 1/4"
102 1/2"	103 1/2"	102 3/4"
103"	104"	103 1/4"
103 1/2"	104 1/2"	103 3/4"
104"	105"	104 1/4"
104 1/2"	105 1/2"	104 3/4"
105"	106"	105 1/4"
105 1/2"	106 1/2"	105 3/4"
106"	107"	106 1/4"
106 1/2"	107 1/2"	106 3/4"
107"	108"	107 1/4"
107 1/2"	108 1/2"	107 3/4"
108"	109"	108 1/4"



**Innovation behind every door**  
 www.specADsystems.com  
 1.425.374.1360

**AD SYSTEMS**  
**BI-PARTING PAIR OF BARN DOORS**  
**ROUGH OPENING GUIDE**

ALL EXISTING PRODUCT TESTING TO DATE HAS BEEN PERFORMED WITH 2X6 LUMBER BACKING IN THE WALL FOR ENTIRE LENGTH OF DOOR TRACK. THE BACKING IS REQUIRED TO PROVIDE ADEQUATE FASTENER PULL OUT RESISTANCE, AND ALSO INCREASED VERTICAL RESISTANCE TO "SEE-SAW" TILTING ACTION OF THE FASTENER OVER TIME DUE TO THE WEIGHT AND VIBRATION OF THE DOOR MOVEMENT.

USE OF ANY BACKING METHOD OR MATERIAL OTHER THAN 2X6 LUMBER BACKING, WOULD NEED TO BE VERIFIED BY THE CUSTOMERS AUTHORIZED PROJECT ENGINEER. AD SYSTEMS STANDARD WARRANTY WILL NOT COVER ANY ISSUES THAT RESULT FROM INADEQUATE WALL BACKING OR IMPROPER MOUNTING OF THE DOOR CARRIAGE TRACK.

