

**DIMENSIONS ARE TO BE USED AS A QUICK REFERENCE ONLY, ACTUAL SIZES MAY VARY.**  
SEE SECOND SHEET FOR ADDITIONAL INFORMATION.

IF YOU USE THIS GUIDE TO CONSTRUCT YOUR WALL OPENINGS, BE SURE TO DOUBLE CHECK YOUR ACTUAL ROUGH OPENING DIMENSIONS BEFORE APPROVING / RELEASING YOUR AD SYSTEMS SHOP DRAWINGS FOR THE FABRICATION OF YOUR DOORS.

IT IS YOUR RESPONSIBILITY TO ENSURE THAT YOUR WALL OPENINGS ARE THE CORRECT SIZE TO FIT THE PROJECT SPECIFIC DOORS THAT YOU ORDER.

**NOTES:**

- \* AD SYSTEMS STANDARD CLEAR OPENING WIDTH IS 36" X 83 1/2" (3'-0" X 6'-11 1/2").
- ^ DOOR LEAVES OVER 48" WIDE ARE CONSIDERED "OVERSIZED". ADDITIONAL CHARGES AND LEAD TIMES WILL APPLY. SEE SECOND SHEET FOR ADDITIONAL INFORMATION.

**DOOR PANEL WEIGHTS**

FLUSH WOOD = \*\* 6 LBS PER SQ FT  
ALUMINUM FRAME WITH 1/4" GLASS = \*\* 4 LBS PER SQ FT

**MAXIMUM SIZE FOR DOOR PANELS:**

DOOR	WIDTH	HEIGHT
WOOD:	60"	120"
ALUMINUM FRAME WITH 1/4" GLASS:	120"	108"

- FOR PANELS LARGER THAN ABOVE PLEASE CONTACT CUSTOMER SERVICE AT CUSTOMERSERVICE@SPECADSYSTEMS.COM

**WIDTH CALCULATIONS:**

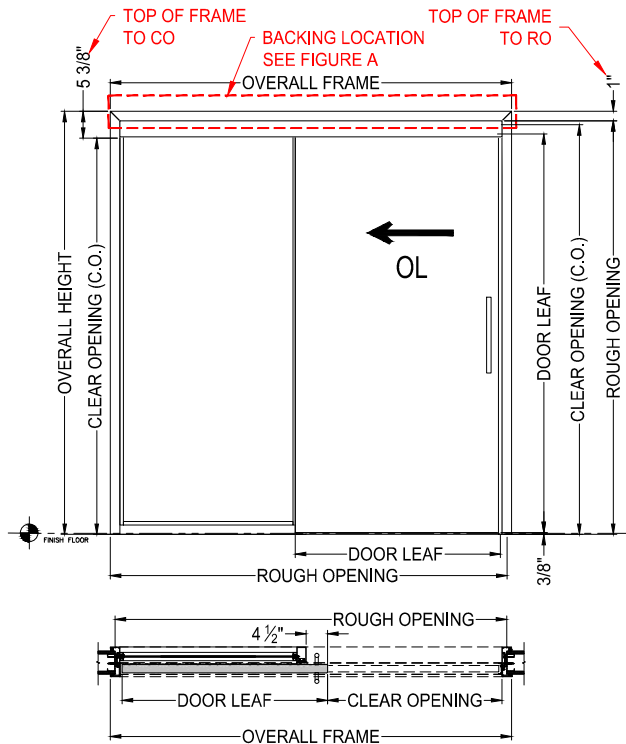
THE "CLEAR OPENING WIDTH" IS FROM THE INSIDE OF FRAME AT JAMB TO EDGE OF DOOR IN FULLY OPEN POSITION

- ROUGH OPENING = CLEAR OPENING TIMES (x) 2, THEN PLUS (+) 10 1/2"
- DOOR LEAF = CLEAR OPENING PLUS (+) 7 1/4"
- VALANCE WIDTH = ROUGH OPENING MINUS (-) 2"
- OVERALL FRAME = ROUGH OPENING PLUS (+) 2"

**HEIGHT CALCULATIONS:**

THE "CLEAR OPENING HEIGHT" IS FINISH FLOOR TO INSIDE OF FRAME AT HEAD

- ROUGH OPENING = CLEAR OPENING HEIGHT PLUS (+) 4 3/8"
- DOOR LEAF = CLEAR OPENING HEIGHT PLUS (+) 1/4"



**SLIDER SIDELITE ONE SIDE LEAF DOORS**

**InsetSlide Door Widths**

CLEAR OPENING	ROUGH OPENING	DOOR LEAF	FRAME WIDTH
32"	74 1/2"	39 1/4"	72 1/2"
33"	76 1/5"	40 1/4"	74 1/2"
* 36"	82 1/2"	43 1/4"	80 1/2"
38"	86 1/2"	45 1/4"	84 1/2"
40 3/4"	92"	48"	90"
42"	94 1/2"	^ 49 1/4"	92 1/2"
48"	106 1/2"	^ 55 1/4"	104 1/2"

**InsetSlide Door Heights**

CLEAR OPENING	ROUGH OPENING	DOOR LEAF	OVERALL FRAME HEIGHT
83 1/2"	87 7/8"	83 3/4"	88 7/8"
83 3/4"	88 1/8"	84"	89 1/8"
84"	88 3/8"	84 1/4"	89 3/8"
86"	90 3/8"	86 1/4"	91 3/8"
95"	99 3/8"	95 1/4"	100 3/8"
96"	100 3/8"	96 1/4"	101 3/8"
100"	104 3/8"	100 1/4"	105 3/8"

**NOTES:**

- MINIMUM ROUGH OPENING WIDTH REQUIRED TO ACCOMMODATE THE SPECIFIED CLEAR OPENING WIDTH.
- SIDELITE MUST MEET MINIMUM WIDTH REQUIREMENT, CAN BE MADE LARGER AS REQUIRED.

**\*\* NOTE: PROJECT ENGINEER MUST DESIGN WALL HEADER TO WITHSTAND WEIGHTS AND LOADS IMPOSED BY TOP HUNG DOOR SYSTEM.**

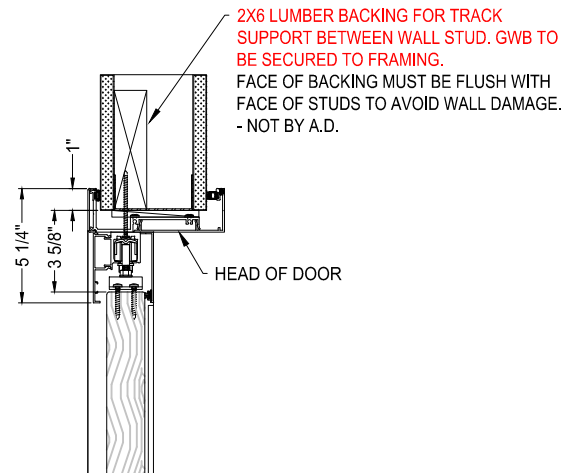


FIGURE A  
BACKING LOCATION



**Innovation behind every door**  
www.specADsystems.com  
1.425.374.1360

**AD SYSTEMS**  
**INSETSLIDE SLIDER SIDELITE ONE SIDE**  
**ROUGH OPENING GUIDE**

**DIMENSIONS ARE TO BE USED AS A QUICK REFERENCE ONLY, ACTUAL SIZES MAY VARY.**  
SEE SECOND SHEET FOR ADDITIONAL INFORMATION.

IF YOU USE THIS GUIDE TO CONSTRUCT YOUR WALL OPENINGS, BE SURE TO DOUBLE CHECK YOUR ACTUAL ROUGH OPENING DIMENSIONS BEFORE APPROVING / RELEASING YOUR AD SYSTEMS SHOP DRAWINGS FOR THE FABRICATION OF YOUR DOORS.

IT IS YOUR RESPONSIBILITY TO ENSURE THAT YOUR WALL OPENINGS ARE THE CORRECT SIZE TO FIT THE PROJECT SPECIFIC DOORS THAT YOU ORDER.

**NOTES:**

- \* AD SYSTEMS STANDARD CLEAR OPENING WIDTH IS 36" X 83 1/2" (3'-0" X 6'-11 1/2").
- ^ DOOR LEAVES OVER 48" WIDE ARE CONSIDERED "OVERSIZED". ADDITIONAL CHARGES AND LEAD TIMES WILL APPLY. SEE SECOND SHEET FOR ADDITIONAL INFORMATION.

**DOOR PANEL WEIGHTS**

FLUSH WOOD = \*\* 6 LBS PER SQ FT  
ALUMINUM FRAME WITH 1/4" GLASS = \*\* 4 LBS PER SQ FT

**MAXIMUM SIZE FOR DOOR PANELS:**

DOOR	WIDTH	HEIGHT
WOOD:	60"	120"
ALUMINUM FRAME WITH 1/4" GLASS:	120"	108"

- FOR PANELS LARGER THAN ABOVE PLEASE CONTACT CUSTOMER SERVICE AT CUSTOMERSERVICE@SPECADSYSTEMS.COM

**WIDTH CALCULATIONS:**

- THE "CLEAR OPENING WIDTH" IS FROM THE INSIDE OF FRAME AT JAMB TO EDGE OF DOOR IN FULLY OPEN POSITION
- ROUGH OPENING = CLEAR OPENING PLUS (+) 6 1/2", THEN TIMES (x) 2, THEN PLUS (+) CLEAR OPENING
  - DOOR LEAF = CLEAR OPENING PLUS (+) 7 1/4"
  - VALANCE WIDTH = ROUGH OPENING MINUS (-) 2"
  - OVERALL FRAME = ROUGH OPENING PLUS (+) 2"

**HEIGHT CALCULATIONS:**

- THE "CLEAR OPENING HEIGHT" IS FINISH FLOOR TO INSIDE OF FRAME AT HEAD
- ROUGH OPENING = CLEAR OPENING HEIGHT PLUS (+) 4 3/8"
  - DOOR LEAF = CLEAR OPENING HEIGHT PLUS (+) 1/4"

**SLIDER SIDELITE BOTH SIDE LEAF DOORS**

**INsetSlide Door Widths**

CLEAR OPENING	ROUGH OPENING	DOOR LEAF	FRAME WIDTH
*36"	121"	43 1/4"	123"
40 3/4"	135 1/4"	48"	137 1/4"
42"	139"	^ 49 1/4"	141"
48"	157"	^ 55 1/4"	159"
66 5/8"	212 7/8"	^ 73 7/8"	214 7/8"
70 5/8"	224 7/8"	^ 77 7/8"	226 7/8"
76 5/8"	242 7/8"	^ 83 7/8"	244 7/8"

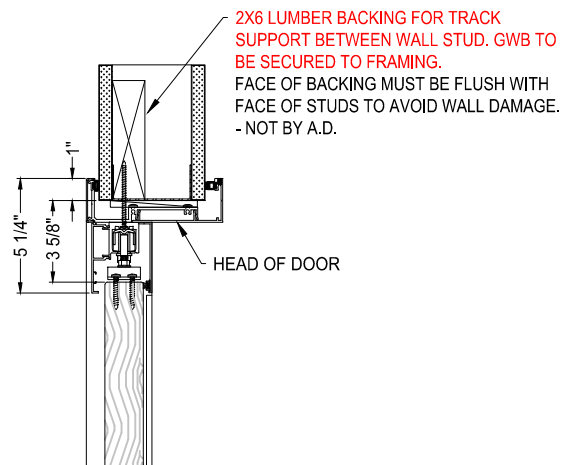
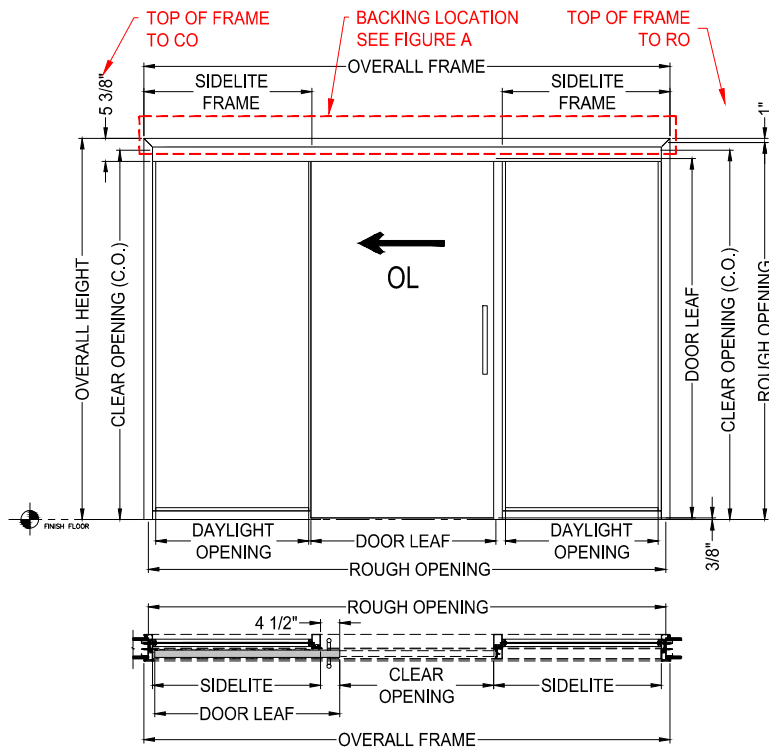
**INsetSlide Door Heights**

CLEAR OPENING	ROUGH OPENING	DOOR LEAF	OVERALL FRAME HEIGHT
83 1/2"	87 7/8"	83 3/4"	88 7/8"
83 3/4"	88 1/8"	84"	89 1/8"
84"	88 3/8"	84 1/4"	89 3/8"
86"	90 3/8"	86 1/4"	91 3/8"
95"	99 3/8"	95 1/4"	100 3/8"
96"	100 3/8"	96 1/4"	101 3/8"
100"	104 3/8"	100 1/4"	105 3/8"

**NOTES:**

- MINIMUM ROUGH OPENING WIDTH REQUIRED TO ACCOMMODATE THE SPECIFIED CLEAR OPENING WIDTH.
- SIDELITE BEHIND DOOR LEAF MUST MEET MINIMUM WIDTH TO ACHIEVE CLEAR OPENING REQUESTED. SIDELITE OPPOSITE DOOR CAN BE MADE LARGER AS REQUIRED.

**\*\* NOTE: PROJECT ENGINEER MUST DESIGN WALL HEADER TO WITHSTAND WEIGHTS AND LOADS IMPOSED BY TOP HUNG DOOR SYSTEM.**



**FIGURE A  
BACKING LOCATION**



**Innovation behind every door**  
www.specADsystems.com  
1.425.374.1360

**AD SYSTEMS**  
**INSETSLIDE SLIDER SIDELITE BOTH SIDES**  
**ROUGH OPENING GUIDE**

**DIMENSIONS ARE TO BE USED AS A QUICK REFERENCE ONLY, ACTUAL SIZES MAY VARY.**

IF YOU USE THIS GUIDE TO CONSTRUCT YOUR WALL OPENINGS, BE SURE TO DOUBLE CHECK YOUR ACTUAL ROUGH OPENING DIMENSIONS BEFORE APPROVING / RELEASING YOUR AD SYSTEMS SHOP DRAWINGS FOR THE FABRICATION OF YOUR DOORS.

IT IS YOUR RESPONSIBILITY TO ENSURE THAT YOUR WALL OPENINGS ARE THE CORRECT SIZE TO FIT THE PROJECT SPECIFIC DOORS THAT YOU ORDER.

**NOTES:**

- \* AD SYSTEMS STANDARD CLEAR OPENING HEIGHT IS 83 1/2" (6'-11 1/2")
- ^ DOOR LEAVES OVER 48" WIDE ARE CONSIDERED "OVERSIZED". ADDITIONAL CHARGES AND LEAD TIMES WILL APPLY. SEE SECOND SHEET FOR ADDITIONAL INFORMATION.

**DOOR PANEL WEIGHTS**

- FLUSH WOOD = \*\* 6 LBS PER SQ FT
- ALUMINUM FRAME WITH 1/4" GLASS = \*\* 4 LBS PER SQ FT

**MAXIMUM SIZE FOR DOOR PANELS:**

DOOR	WIDTH	HEIGHT
WOOD:	60"	120"
ALUMINUM FRAME WITH 1/4" GLASS:	120"	108"

- FOR PANELS LARGER THAN ABOVE PLEASE CONTACT CUSTOMER SERVICE AT CUSTOMERSERVICE@SPECADSYSTEMS.COM

**WIDTH CALCULATIONS:**

THE "CLEAR OPENING WIDTH" IS FROM THE INSIDE OF FRAME AT JAMB TO EDGE OF DOOR IN FULLY OPEN POSITION

- ROUGH OPENING = CLEAR OPENING TIMES (x) 2, THEN PLUS (+) 16 3/8"
- DOOR LEAF = CLEAR OPENING PLUS (+) 13 1/2", THEN MINUS (-) 1/8", THEN DIVIDE BY (÷) 2
- VALANCE WIDTH = ROUGH OPENING MINUS (-) 2"
- OVERALL FRAME = ROUGH OPENING PLUS (+) 2

**HEIGHT CALCULATIONS:**

THE "CLEAR OPENING HEIGHT" IS FINISH FLOOR TO INSIDE OF FRAME AT HEAD

- ROUGH OPENING = CLEAR OPENING HEIGHT PLUS (+) 4 3/8"
- DOOR LEAF = CLEAR OPENING HEIGHT PLUS (+) 1/4"

**BI-PARTING SLIDER SIDELITE BOTH SIDE LEAF DOORS**

**InsetSlide Door Widths**

CLEAR OPENING	ROUGH OPENING	DOOR LEAF	FRAME WIDTH
50 5/8"	117 5/8"	32"	119 5/8"
58 5/8"	133 5/8"	36"	135 5/8"
62 5/8"	141 5/8"	38"	143 5/8"
66 5/8"	149 5/8"	40"	151 5/8"
70 5/8"	157 5/8"	42"	159 5/8"
76 5/8"	169 5/8"	45"	171 5/8"
82 5/8"	181 5/8"	48"	183 5/8"
90 5/8"	197 5/8"	^ 52"	199 5/8"

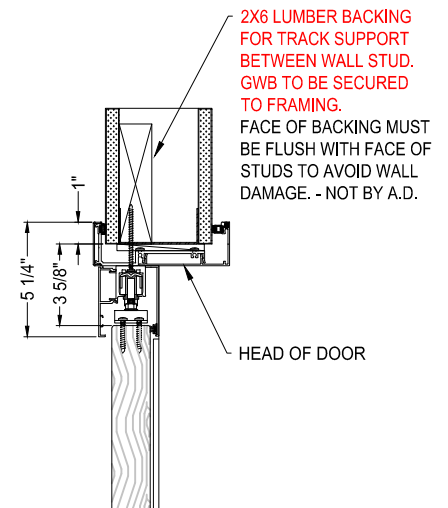
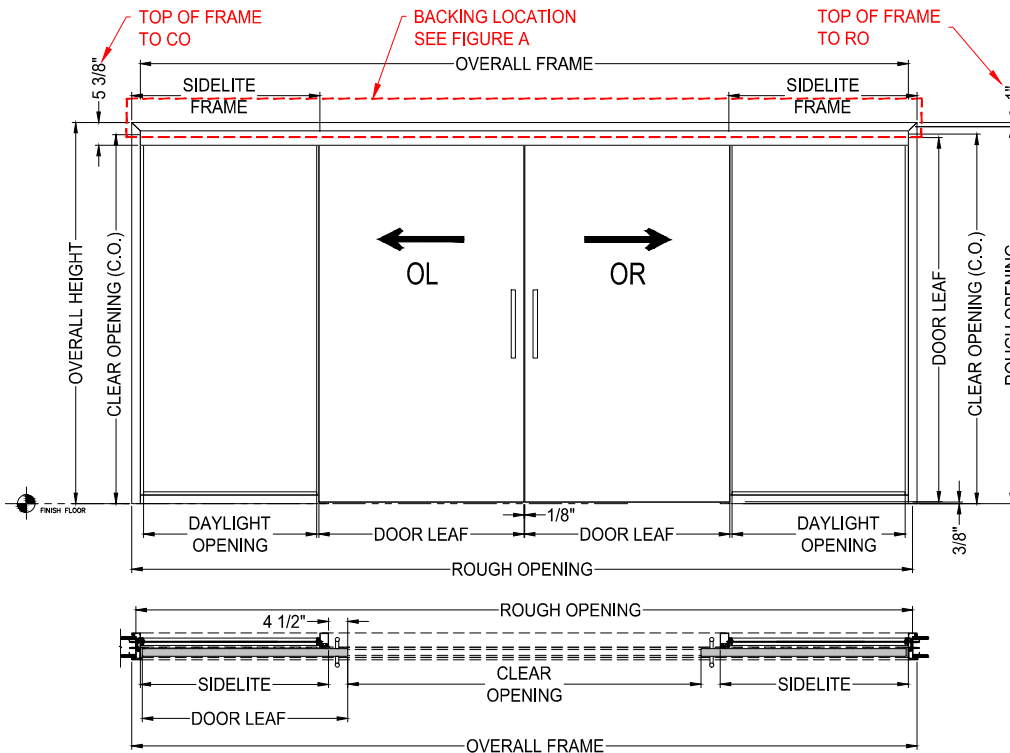
**InsetSlide Door Heights**

CLEAR OPENING	ROUGH OPENING	DOOR LEAF	OVERALL FRAME HEIGHT
* 83 1/2"	87 7/8"	83 3/4"	88 7/8"
83 3/4"	88 1/8"	84"	89 1/8"
84"	88 3/8"	84 1/4"	89 3/8"
86"	90 3/8"	86 1/4"	91 3/8"
95"	99 3/8"	95 1/4"	100 3/8"
96"	100 3/8"	96 1/4"	101 3/8"
100"	104 3/8"	100 1/4"	105 3/8"

**NOTES:**

- MINIMUM ROUGH OPENING WIDTH IS REQUIRED TO ACCOMMODATE THE SPECIFIED CLEAR OPENING WIDTH.
- BOTH SIDELITES MUST MEET MINIMUM WIDTH, CAN BE MADE LARGER AS REQUIRED.
- MOST PREFER SYMMETRICAL SIDELITES BUT DIFFERENT SIZES ARE AN OPTION, AS LONG AS MINIMUM IS MET FOR CLEARANCE.

**\*\* NOTE: PROJECT ENGINEER MUST DESIGN WALL HEADER TO WITHSTAND WEIGHTS AND LOADS IMPOSED BY TOP HUNG DOOR SYSTEM.**



**FIGURE A  
BACKING LOCATION**



**Innovation behind every door**  
www.specADsystems.com  
1.425.374.1360

**AD SYSTEMS**  
**INSETSLIDE BI-PARTING PAIR SIDELIGHT BOTH SIDES**  
**ROUGH OPENING GUIDE**

ALL EXISTING PRODUCT TESTING TO DATE HAS BEEN PERFORMED WITH 2X6 LUMBER BACKING IN THE WALL FOR ENTIRE LENGTH OF DOOR TRACK. THE BACKING IS REQUIRED TO PROVIDE ADEQUATE FASTENER PULL OUT RESISTANCE, AND ALSO INCREASED VERTICAL RESISTANCE TO "SEE-SAW" TILTING ACTION OF THE FASTENER OVER TIME DUE TO THE WEIGHT AND VIBRATION OF THE DOOR MOVEMENT.

USE OF ANY BACKING METHOD OR MATERIAL OTHER THAN 2X6 LUMBER BACKING, WOULD NEED TO BE VERIFIED BY THE CUSTOMERS AUTHORIZED PROJECT ENGINEER. AD SYSTEMS STANDARD WARRANTY WILL NOT COVER ANY ISSUES THAT RESULT FROM INADEQUATE WALL BACKING OR IMPROPER MOUNTING OF THE DOOR CARRIAGE TRACK.

